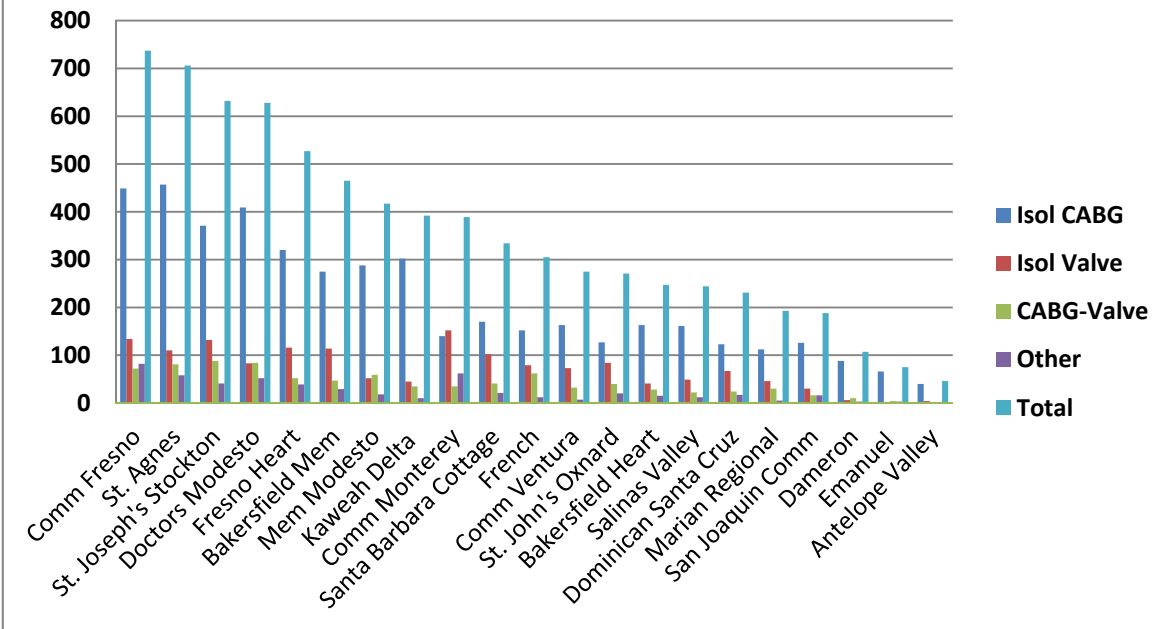
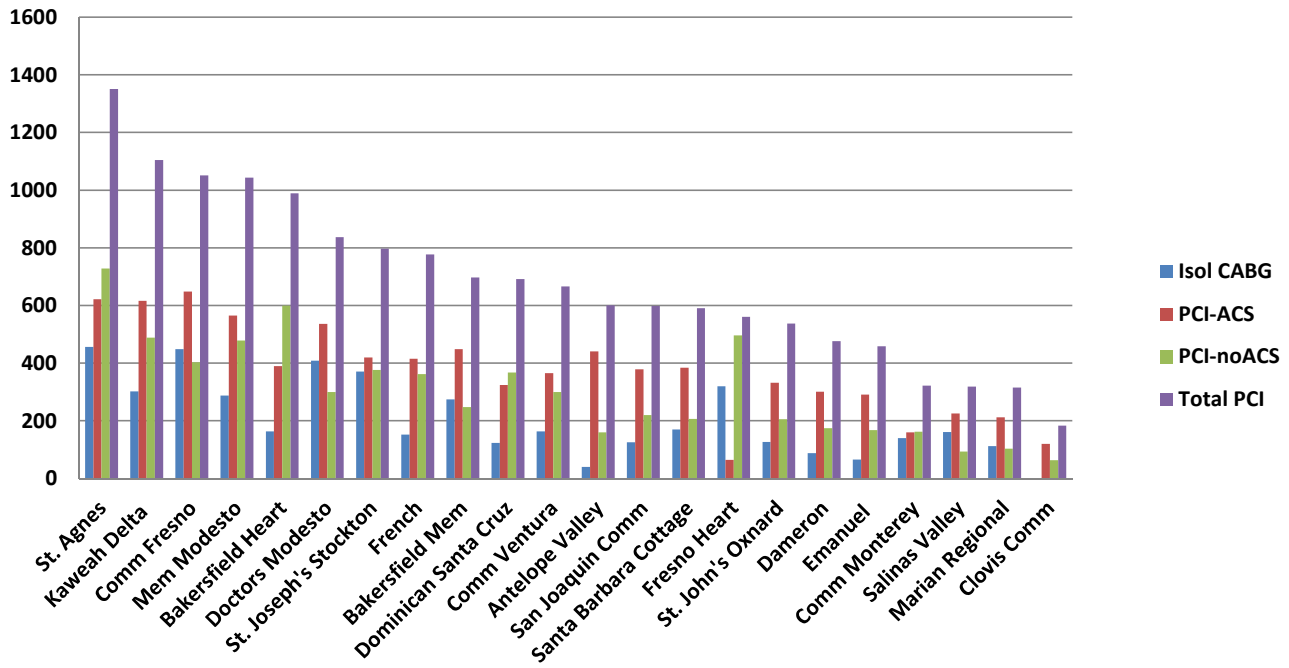


## Central California Jan 2012-Dec 2013



Hospital	Isol CABG	Isol Valve	CABG-Valve	Other	Total
Comm Fresno	449	134	72	82	737
St. Agnes	457	110	81	58	706
St. Joseph's Stockton	371	132	88	41	632
Doctors Modesto	409	83	84	52	628
Fresno Heart	320	116	52	39	527
Bakersfield Mem	275	114	47	29	465
Mem Modesto	288	52	59	18	417
Kaweah Delta	302	45	35	10	392
Comm Monterey	140	152	35	62	389
Santa Barbara Cottage	170	102	41	21	334
French	152	79	62	12	305
Comm Ventura	163	73	32	7	275
St. John's Oxnard	127	84	40	20	271
Bakersfield Heart	163	41	28	15	247
Salinas Valley	161	49	22	12	244
Dominican Santa Cruz	123	67	24	17	231
Marian Regional	112	46	30	5	193
San Joaquin Comm	126	30	16	16	188
Dameron	88	6	10	3	107
Emanuel	66	2	4	3	75
Antelope Valley	40	4	0	2	46

## Central California Jan 2012-Dec 2013



Hospital	Isol CABG	PCI-ACS	PCI-noACS	Total PCI	PCI/CABG	%ACS
St. Agnes	457	622	729	1,351	2.96	46.0
Kaweah Delta	302	616	489	1,105	3.66	55.7
Comm Fresno	449	649	403	1,052	2.34	61.7
Mem Modesto	288	565	479	1,044	3.63	54.1
Bakersfield Heart	163	390	600	990	6.07	39.4
Doctors Modesto	409	537	300	837	2.05	64.2
St. Joseph's Stockton	371	420	377	797	2.15	52.7
French	152	415	362	777	5.11	53.4
Bakersfield Mem	275	449	248	697	2.53	64.4
Dominican Santa Cruz	123	324	368	692	5.63	46.8
Comm Ventura	163	366	300	666	4.09	55.0
Antelope Valley	40	441	160	601	15.03	73.4
San Joaquin Comm	126	379	220	599	4.75	63.3
Santa Barbara Cottage	170	384	207	591	3.48	65.0
Fresno Heart	320	65	496	561	1.75	11.6
St. John's Oxnard	127	332	206	538	4.24	61.7
Dameron	88	301	175	476	5.41	63.2
Emanuel	66	291	168	459	6.95	63.4
Comm Monterey	140	160	162	322	2.30	49.7
Salinas Valley	161	226	93	319	1.98	70.8
Marian Regional	112	212	104	316	2.82	67.1
Clovis Comm	0	120	63	183	N/A	65.6