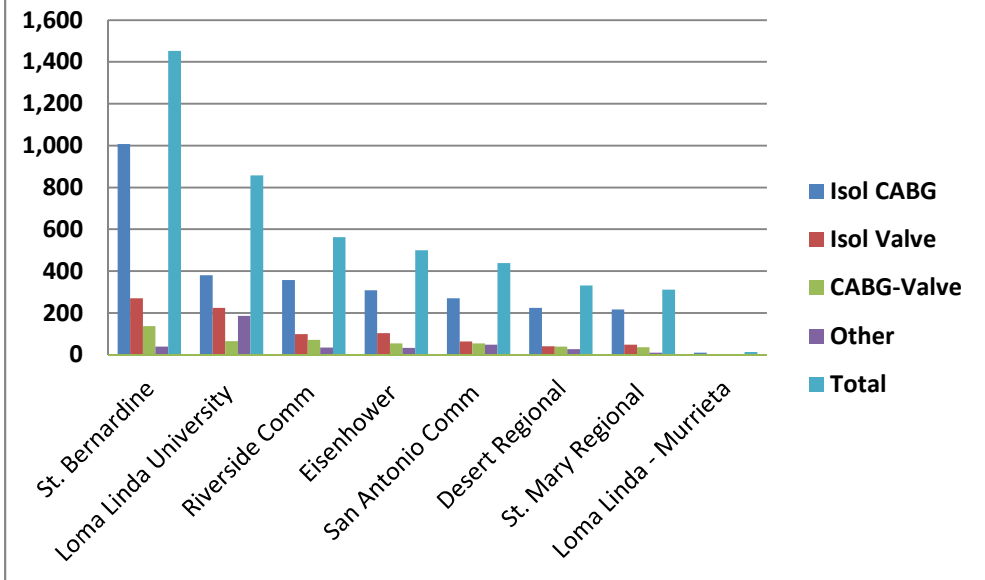
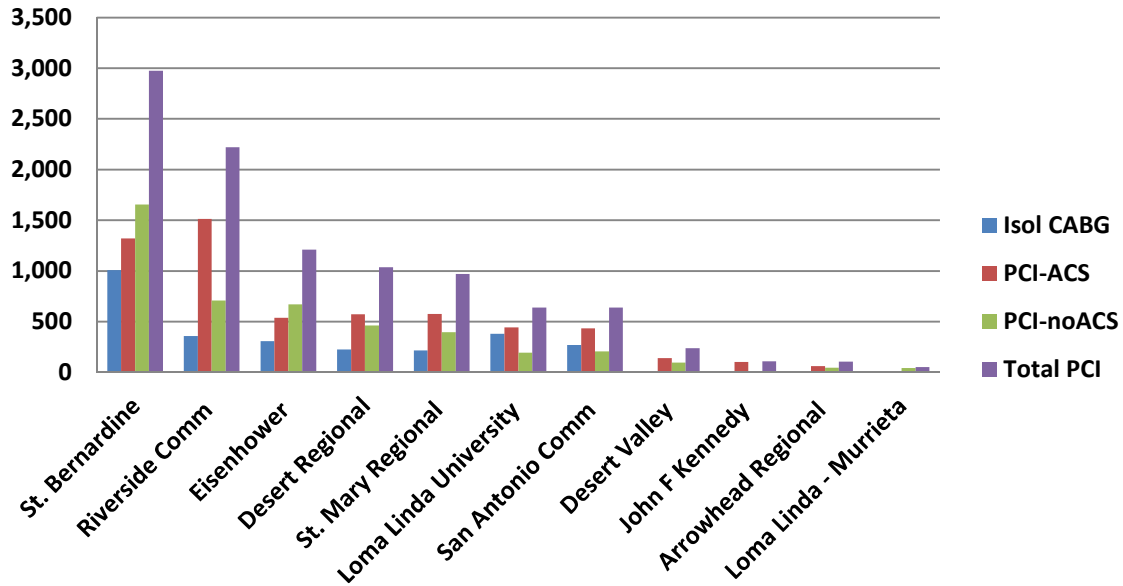


## Inland Empire Jan 2012-Dec 2013



Hospital	Isol CABG	Isol Valve	CABG-Valve	Other	Total
St. Bernardine	1,007	270	137	39	1,453
Loma Linda University	381	225	66	186	858
Riverside Comm	357	99	72	35	563
Eisenhower	308	103	55	34	500
San Antonio Comm	270	64	55	49	438
Desert Regional	225	41	39	27	332
St. Mary Regional	217	49	36	10	312
Loma Linda - Murrieta	11	2	0	0	13

## Inland Empire Jan 2012-Dec 2013



Hospital	Isol CABG	PCI-ACS	PCI-noACS	Total PCI	PCI/CABG	%ACS
St. Bernardine	1,007	1,321	1,655	2,976	2.96	44.4
Riverside Comm	357	1,513	707	2,220	6.22	68.2
Eisenhower	308	539	670	1,209	3.93	44.6
Desert Regional	225	572	463	1,035	4.60	55.3
St. Mary Regional	217	574	396	970	4.47	59.2
Loma Linda University	381	444	195	639	1.68	69.5
San Antonio Comm	270	432	206	638	2.36	67.7
Desert Valley	5	141	96	237	47.40	59.5
John F Kennedy	0	101	7	108	N/A	93.5
Arrowhead Regional	0	60	45	105	N/A	57.1
Loma Linda - Murrieta	11	11	42	53	4.82	20.8