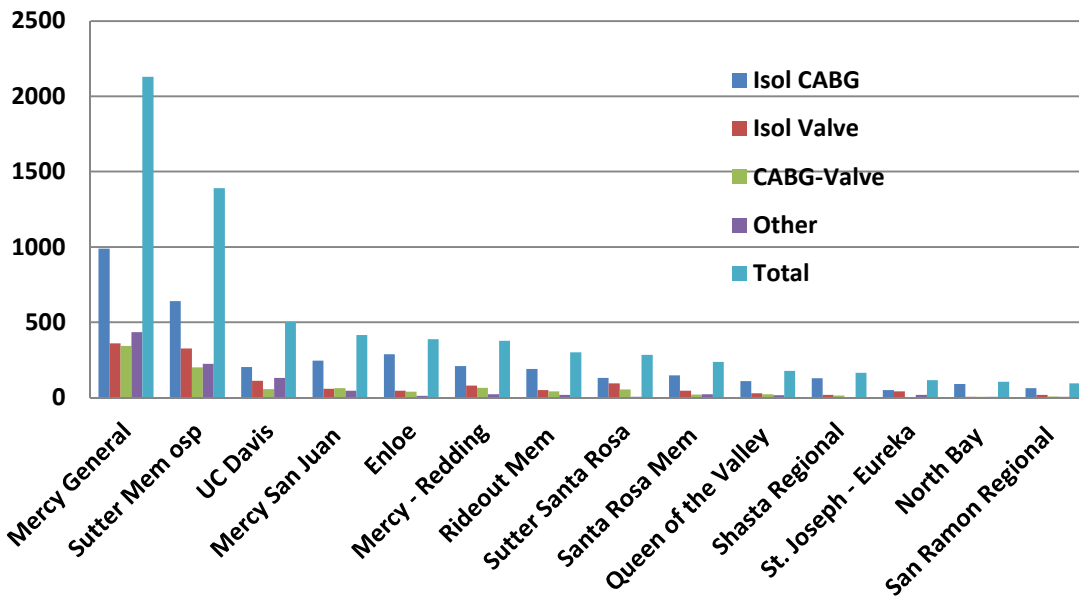
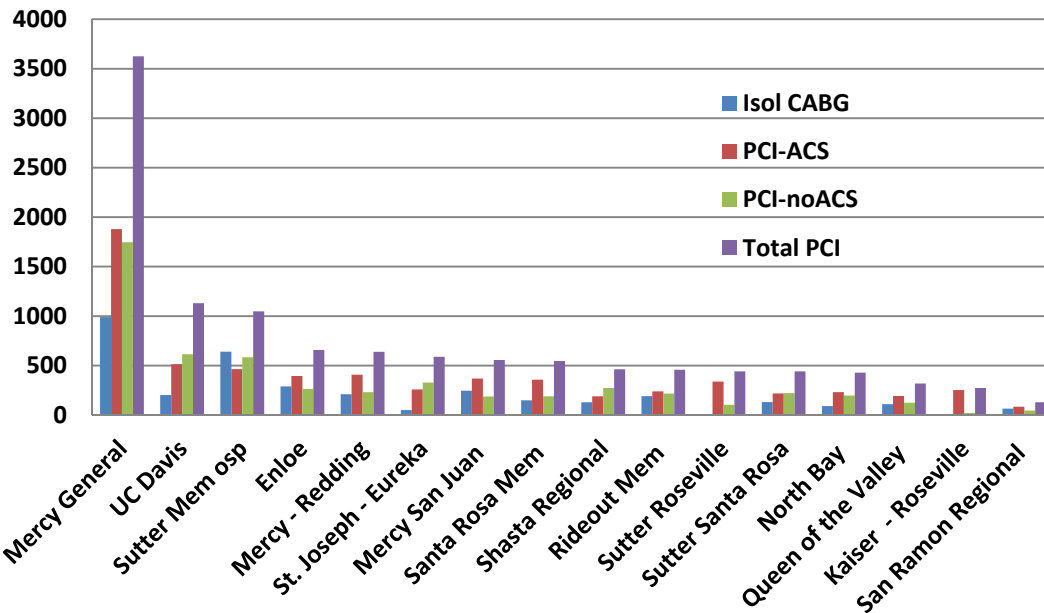


Northern California Surg Jan 2012-Dec 2013



Hospital	Isol CABG	Isol Valve	CABG-Valve	Other	Total
Mercy General	990	361	344	434	2,129
Sutter Mem osp	640	326	201	224	1,391
UC Davis	203	112	56	131	502
Mercy San Juan	246	59	64	46	415
Enloe	289	47	39	13	388
Mercy - Redding	210	80	65	22	377
Rideout Mem	191	51	42	18	302
Sutter Santa Rosa	131	95	54	5	285
Santa Rosa Mem	149	46	20	22	237
Queen of the Valley	110	29	23	16	178
Shasta Regional	129	19	15	3	166
St. Joseph - Eureka	51	43	4	18	116
North Bay	90	5	5	5	105
San Ramon Regional	64	19	8	5	96

Northern California PCI Jan 2012-Dec 2013



Hospital	Isol CABG	PCI-ACS	PCI-noACS	Total PCI	PCI/CABG	%ACS
Mercy General	990	1,879	1,746	3,625	3.66	51.8
UC Davis	203	515	615	1,130	5.57	45.6
Sutter Mem osp	640	464	584	1,048	1.64	44.3
Enloe	289	395	264	659	2.28	59.9
Mercy - Redding	210	408	231	639	3.04	63.8
St. Joseph - Eureka	51	259	329	588	11.53	44.0
Mercy San Juan	246	368	188	556	2.26	66.2
Santa Rosa Mem	149	358	189	547	3.67	65.4
Shasta Regional	129	190	273	463	3.59	41.0
Rideout Mem	191	240	217	457	2.39	52.5
Sutter Roseville	0	338	104	442	N/A	76.5
Sutter Santa Rosa	131	219	222	441	3.37	49.7
North Bay	90	231	197	428	4.76	54.0
Queen of the Valley	110	193	125	318	2.89	60.7
Kaiser - Roseville	0	252	21	273	N/A	92.3
San Ramon Regional	64	84	45	129	2.02	65.1